



MERCURY

# 2010 Milan+Milan Hybrid



Specifications

[mercuryvehicles.com](http://mercuryvehicles.com)



MERCURY

# 2010 Milan+Milan Hybrid

## Specifications

### BASE MODEL DIMENSIONS

Wheelbase 107.4"  
 Length 189.0"  
 Width (excl. mirrors/incl. mirrors) 72.2"/80.1"  
 Height 56.9"  
 Front track 61.7"  
 Rear track 61.3"  
 Head room (front/rear) 38.7"/37.8"  
 Shoulder room (front/rear) 57.4"/56.5"  
 Leg room (front/rear) 42.3"/37.1"

### CAPACITIES

Fuel capacity  
 FWD: 17.5 gal.  
 AWD: 16.5 gal.  
 Cargo volume  
 Milan: 16.5 cu. ft.  
 Milan Hybrid: 11.8 cu. ft.  
 Seating capacity 5  
 Total passenger volume  
 Milan: 100.3 cu. ft.  
 Milan Hybrid: 99.8 cu. ft.

### HORSEPOWER, TORQUE AND 2010 EPA-ESTIMATED FUEL ECONOMY 2.5L iVCT DURATEC® I-4 ENGINE

Horsepower 175 @ 6000 rpm  
 Torque 172 lb.-ft. @ 4500 rpm  
 6-speed manual  
 22 mpg city/31 hwy.<sup>1</sup>  
 22 mpg city/29 hwy.<sup>2</sup>  
 6-speed automatic  
 23 mpg city/34 hwy.<sup>1</sup>  
 22 mpg city/31 hwy.<sup>2</sup>

### 3.0L iVCT DURATEC V-6 FFV ENGINE<sup>3</sup>

Horsepower 240 @ 6550 rpm  
 Torque 223 lb.-ft. @ 4300 rpm  
 6-speed SelectShift Automatic™ (FWD)  
 18 mpg city/27 hwy.  
 6-speed SelectShift Automatic (AWD)  
 18 mpg city/25 hwy.

### 2.5L iVCT ATKINSON-CYCLE I-4 ENGINE WITH PERMANENT-MAGNET AC-SYNCHRONOUS ELECTRIC MOTOR

Net horsepower 191  
 Electronically controlled Continuously Variable Transmission (eCVT)  
 41 mpg city/36 hwy.

### STANDARD FEATURES

#### POWERTRAIN/FUNCTIONALITY

4-wheel disc Anti-lock Brake System (ABS)  
 Front-wheel drive (FWD)  
 Short- and Long-Arm (SLA) independent front suspension  
 Multilink independent rear suspension  
 Power rack-and-pinion steering

#### EXTERIOR

Chrome exhaust tips  
 Easy Fuel™ capless fuel-filler system  
 Light-Emitting Diode (LED) taillamps  
 Power, heated body-color sideview mirrors with security approach lamps  
 Solar-tinted glass

#### INTERIOR

Audio input jack  
 Cabin air filtration system  
 Dash-top storage bin  
 Front center console with armrest, two-tiered storage and 2 beverage holders (non-Hybrid only)  
 Ice Blue™-lit instrument panel cluster  
 Leather-wrapped steering wheel with cruise and audio controls  
 Message center  
 Power door locks with child-safety rear door locks  
 Power remote trunk release  
 Power windows with one-touch-up/-down driver-window feature  
 SIRIUS® Satellite Radio includes satellite receiver, antenna and introductory 6-month subscription  
 Tilt/telescoping steering column

#### SECURITY/SAFETY

Personal Safety System™ for driver and front passenger with dual-stage front airbags<sup>4</sup>, safety belt pretensioners, safety belt energy-management retractors, safety belt usage sensors, driver-seat position sensor, crash severity sensor, restraint control module and Front-Passenger Sensing System  
 3-point safety belts for all seating positions  
 AdvanceTrac® electronic stability control with Brake-Actuated Traction Control  
 Front-seat side airbags<sup>4</sup>  
 Lower anchors and tether anchors for child-safety seats (LATCH)  
 Perimeter anti-theft alarm  
 SecuriCode™ keyless-entry keypad  
 SecuriLock® passive anti-theft ignition system  
 Side-curtain airbags<sup>4</sup>  
 Side-intrusion door beams  
 SOS Post-Crash Alert System™  
 Tire Pressure Monitoring System (excludes spare)

Comparisons based on 2009 competitive models (Midsize Sedan class), publicly available information and Ford certification data at time of PDF. Some features discussed may be optional. Vehicles shown may contain optional equipment. Features shown may be offered only in combination with other options or subject to additional ordering requirements or limitations. Dimensions shown may vary due to optional features and/or production variability. Following release of this PDF, certain changes in standard equipment, options and the like, or product delays may have occurred which would not be included in these pages. Your Lincoln Mercury Dealer is the best source for up-to-date information. Lincoln Mercury reserves the right to change product specifications at any time without incurring obligations. Mercury Accessories reserves the right to change product availability at any time without incurring obligations. Visit [mercuryaccessories.com](http://mercuryaccessories.com) or see your local dealer for the most up-to-date product information and availability.

"SIRIUS," the SIRIUS dog logo and related marks are trademarks of SIRIUS Satellite Radio Inc. Not available in AK and HI.

Sony is a registered trademark of Sony Corporation.

Dolby and Pro Logic are registered trademarks of Dolby Laboratories.

© 2009 Lincoln Mercury, Ford Motor Company  
 10MMLNWEBPDFSPEC

<sup>1</sup>Rapid Spec 100A and 101A. <sup>2</sup>Rapid Spec 102A and 103A. <sup>3</sup>Fuel economy when operating on E85 will yield different values than gasoline. See *Fuel Economy Guide* for more information. <sup>4</sup>Always wear your safety belt and secure children in the rear seat.



MERCURY

# 2010 Milan+Milan Hybrid

## Build Your Milan

### MILAN

Includes all the standard features, plus:

2.5L DOHC Duratec® I-4 engine with iVCT

6-speed manual transmission

16" 5-spoke painted-aluminum wheels

P205/60R16 all-season rolling resistance tires

Halogen headlamps

6-way power driver seat with manual lumbar

2-way manual fold-down front-passenger seat

60/40 split-folding spring-assisted rear seat (non-hybrid only)

AM/FM stereo/single-CD player with MP3 capability

Single-zone manual air conditioning

### AVAILABLE OPTION GROUPS

6-speed automatic transmission, carpeted front and rear floor mats, 17" 5-spoke-design steel wheels with silver-painted covers, and P225/50R17 all-season tires

6-speed automatic transmission, carpeted front and rear floor mats, 17" 5-spoke-design steel wheels with silver-painted covers, P225/50R17 all-season tires, fog lamps, rear spoiler, and **Sun & SYNC Package**, which includes power tilt-and-slide moonroof, auto-dimming rearview mirror with microphone and compass, and Mercury SYNC® voice-activated, in-vehicle communications and entertainment system

### AVAILABLE OPTIONS AND PACKAGES

6-speed automatic transmission

All-weather floor mats

Auto-dimming rearview mirror<sup>1</sup> with microphone and compass

Mercury SYNC<sup>2</sup> voice-activated, in-vehicle communications and entertainment system

Remote start systems<sup>3</sup>

Reverse Sensing System<sup>4</sup>

**Sun & SYNC Package<sup>4</sup>**

White Platinum Metallic Tri-Coat paint<sup>4</sup>

### MILAN PREMIER

Includes all the standard features on Milan, plus:

6-speed automatic transmission

17" 7-spoke painted-aluminum wheels

P225/50R17 all-season tires

Automatic halogen headlamps

Fog lamps

8-way power driver seat with manual lumbar

6-way power fold-down front-passenger seat

Leather-trimmed seats

Heated front seats

Carpeted front and rear floor mats

Ambient Lighting

Dual-zone Electronic Automatic Temperature Control

Auto-dimming rearview mirror with microphone and compass

Mercury SYNC voice-activated, in-vehicle communications and entertainment system

### AVAILABLE OPTION GROUPS

Rear spoiler, Reverse Sensing System, and **Driver's Vision Package**, which includes BLIS® (Blind Spot Information System) with Cross Traffic Alert and Rear View Camera

Rear spoiler, Reverse Sensing System, **Driver's Vision Package**, and **Moon & Tune Package**, which includes power tilt-and-slide moonroof and Sony® Audio System with DAEP 5.1 Surround Sound, AM/FM stereo/6-disc in-dash CD changer, MP3 capability and 12 speakers

### AVAILABLE OPTIONS AND PACKAGES

3.0L Duratec V-6 FFV engine with iVCT and 6-speed SelectShift Automatic™ transmission

All-weather floor mats

Intelligent All-Wheel Drive (AWD) system (3.0L V-6 only)

Hard drive-based, voice-activated Navigation System features SIRIUS Travel Link™ (with introductory 6-month subscription) and about 10 gigabytes of digital storage for pictures and music; includes Sony Audio System with DAEP 5.1 Surround Sound, AM/FM stereo/single-CD/DVD, MP3 capability and 12 speakers

**Moon & Tune Package<sup>6</sup>**

Rear spoiler

Remote start systems

Reverse Sensing System

**VOGA Package** includes chrome-accent finishes on grille, rear decklid appliqué and rear badging; 17" 8-spoke chrome wheels with VOGA center caps; unique VOGA exterior badging; unique floor mats with embroidered VOGA logo; Cashmere-colored door-trim inserts; Cashmere-colored leather-trimmed seats with tone-on-tone Cashmere stitching; and VOGA embroidered on front seatbacks (available only with Tuxedo Black or White Suede exterior colors and Dark Charcoal interior)

White Platinum Metallic Tri-Coat paint

### MILAN HYBRID

Includes all the standard features on Milan Premier, plus:

2.5L iVCT I-4 Atkinson-cycle engine with Permanent-Magnet AC-synchronous electric motor

Electronically controlled Continuously Variable Transmission (eCVT)

275-volt sealed nickel-metal-hydrate (NiMH) battery

Regenerative Braking System

17" 15-spoke painted-aluminum wheels

Reverse Sensing System

SmartGauge™ with EcoGuide instrument cluster with 2 configurable LCD screens and message center

110-volt AC power outlet

**Driver's Vision Package** includes BLIS (Blind Spot Information System) with Cross Traffic Alert and Rear View Camera

**Moon & Tune Package** includes power tilt-and-slide moonroof and Sony Audio System with DAEP 5.1 Surround Sound, AM/FM stereo/6-disc in-dash CD changer, MP3 capability and 12 speakers

### AVAILABLE OPTIONS AND PACKAGES

All-weather floor mats

Hard drive-based, voice-activated Navigation System features SIRIUS Travel Link (with introductory 6-month subscription) and about 10 gigabytes of digital storage for pictures and music; includes Sony Audio System with DAEP 5.1 Surround Sound, AM/FM stereo/single-CD/DVD, MP3 capability and 12 speakers

Remote start systems

White Platinum Metallic Tri-Coat paint

<sup>1</sup>Requires 6-speed automatic transmission, Mercury SYNC, carpeted front and rear floor mats, 17" 5-spoke-design steel wheels with silver-painted covers, and P225/50R17 all-season tires. <sup>2</sup>Requires 6-speed automatic transmission, auto-dimming rearview mirror, carpeted front and rear floor mats, 17" 5-spoke-design steel wheels with silver-painted covers, and P225/50R17 all-season tires. <sup>3</sup>Requires 6-speed automatic transmission. <sup>4</sup>Requires 6-speed automatic transmission, carpeted front and rear floor mats, 17" 5-spoke-design steel wheels with silver-painted covers, and P225/50R17 all-season tires. <sup>5</sup>Requires Driver's Vision Package, Moon & Tune Package, rear spoiler and Reverse Sensing System. <sup>6</sup>Single-CD Sony Audio System when paired with Navigation System.

Features shown may be offered only in combination with other options or subject to additional ordering requirements or limitations.



MERCURY

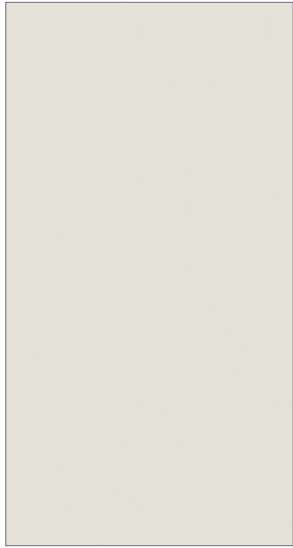
# 2010 Milan+Milan Hybrid

## Exterior Colors

1: Milan 2: Milan Premier 3: Milan Hybrid 4: VOGA Package



White Platinum Metallic Tri-Coat 1 2 3



White Suede 1 2 4



Brilliant Silver Metallic 1 2 3



Smokestone Metallic 1 2



Light Ice Blue Metallic 3



Atlantis Green Metallic 1 2 3



Tuxedo Black Metallic 1 2 3 4



Sterling Grey Metallic 1 2



Sangria Red Metallic 1 2



Sport Blue Metallic 1 2

Mercury uses clearcoat paint for beauty and protection. Colors are representative only.

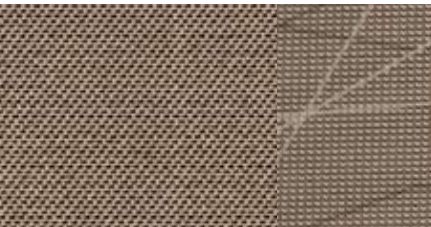


**MERCURY**

# 2010 Milan+Milan Hybrid

## Interior Colors

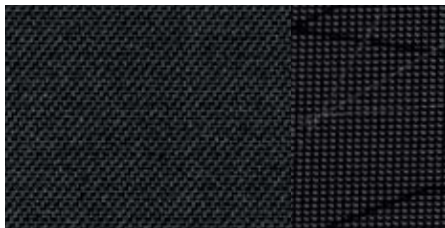
1: Milan 2: Milan Premier 3: Milan Hybrid 4: VOGA Package



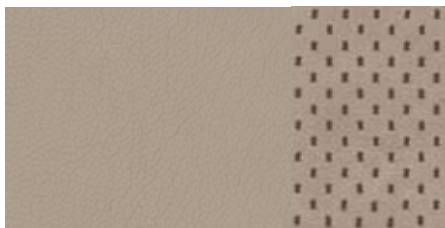
Camel Cloth 1



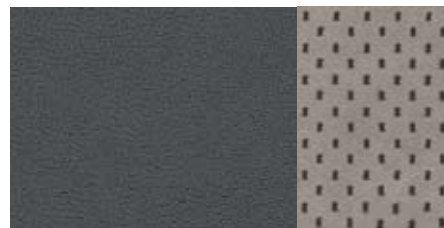
Medium Light Stone Cloth 1



Dark Charcoal Cloth 1



Camel Leather with Perforated Inserts 2



Agate Leather with Medium Light Stone Inserts 2 3



Dark Charcoal Leather with Perforated Inserts 2



Cashmere-Colored Leather 4

## Wheels



16" 5-SPOKE PAINTED-ALUMINUM WHEELS  
Standard on I-4 Milan



17" 5-SPOKE-DESIGN STEEL WHEELS  
WITH SILVER PAINT  
Available on Milan



17" 7-SPOKE PAINTED-ALUMINUM WHEELS  
Standard on I-4 Premier and V-6 Premier



17" 15-SPOKE PAINTED-ALUMINUM WHEELS  
Standard on Milan Hybrid



17" 8-SPOKE CHROME-CLAD WHEELS  
Included with VOGA Package